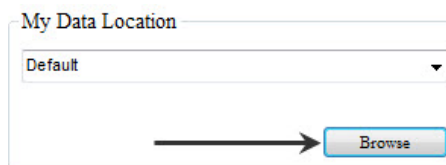


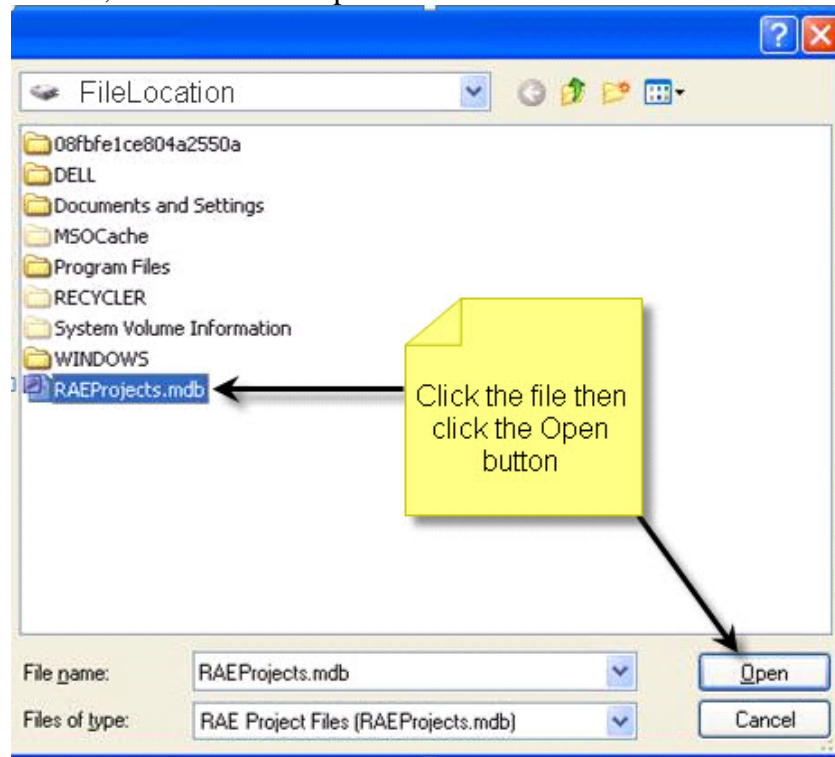
How do I Change the Data Location / Networking using the Total Package

For further flexibility, and for future project sharing, you may wish to store your data files in a centralized location. By default the RAEProjects.mdb file is placed in C:\.

- Using Windows Explorer, locate the file.
- Copy the file.
- Paste the file in the new location.
- After moving the file, use the 'Browse' button and locate the file.



- Click on RAEProjects.mdb, then click the 'Open' button.



- 'My Data Location' will contain the new file location.

