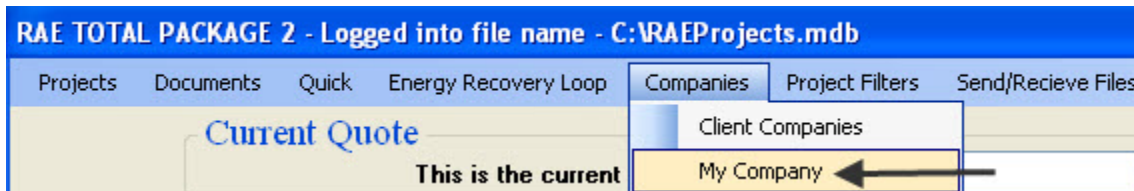


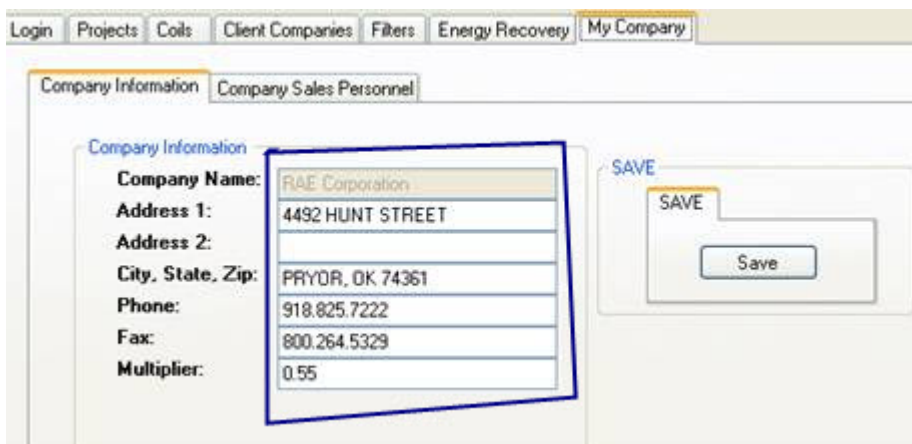
# Setting up Your Company Information

You will need to login using the administrator UserID and Password to make changes to your company information.

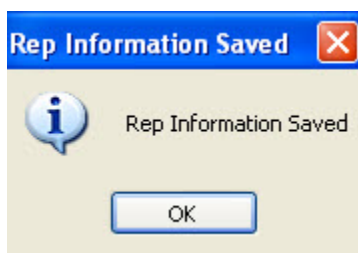
- Select 'My Company' from the Companies menu.



- Enter your information.



- Click the  button.
  - When the changes have been saved, the following message will be displayed.



- You may edit this information later, if needed.
- Note: If you are using the pricing option, the initial company information will be downloaded from the RAE servers during installation.